

TENDER - SURPLUS LAND

<u>Property Roll No.:</u>	12-31-132-015-09200-0000
<u>Property Description:</u>	Concession 1, West Part Lot 27; Elzevir; now the Municipality of Tweed; County of Hastings
<u>Property Dimensions:</u>	Area: 100 Acres
<u>2018 Assessed Value:</u>	\$29,000
<u>Maintained Road Frontage:</u>	No maintained road frontage.
<u>Zoning:</u>	Rural (RU) and small areas of Environmental Protection (EP).
<u>Minimum Tender Amount:</u>	\$35,000
<u>Assessment Map No.:</u>	Elzevir #8

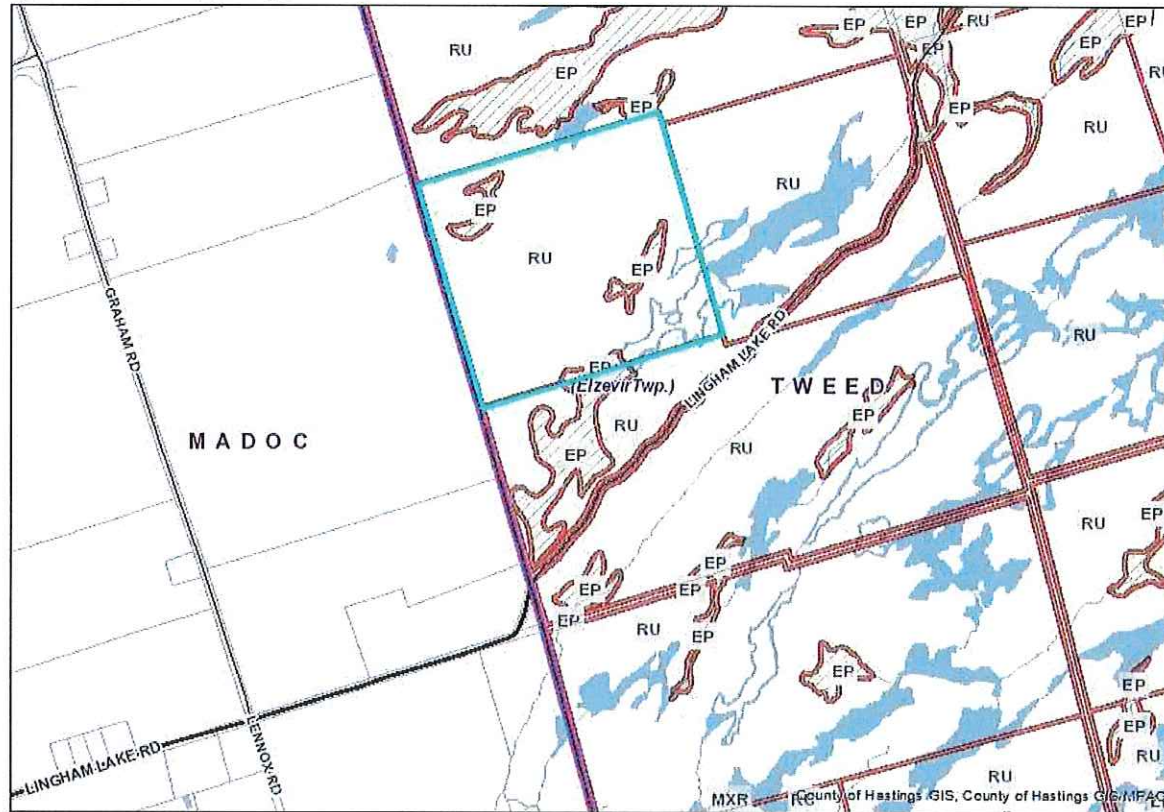
TENDERING GUIDELINES

The Tender to Purchase, accompanied by a deposit of at least 20 per cent of the tendered amount, shall be submitted to the Municipality of Tweed in a **sealed envelope**. The envelope should be addressed to the Municipality of Tweed and also indicate "***Surplus Land***".

All tenders must be received by the Treasurer's office not later than **3:00 p.m. local time on Thursday, November 8, 2018**. The tenders will be opened in public on the same day commencing at 3:10 p.m. in the Tweed Council Chambers at the Municipality of Tweed Office, 255 Metcalf St., Tweed. ON K0K 3J0.



Map Title



Legend

Emergency Services

- Hospital
- Ambulance Base
- Fire Station
- Police Station

Roads

- Major Road
- Minor Road
- Water Access Only
- Forest Access

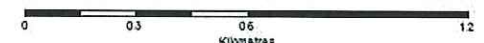
Parcel Information

- Parcel Information

Zoning Description

- Zoning
- EP
- ES-EW

This map has been produced from the County of Hastings Online Mapping Application (www.hastingscounty.com)
 Data Sources: Ontario GeoSpatial Data Exchange (OGDE), Municipal Property Assessment Corporation (MPAC) & County of Hastings. This product is for informational purposes only and may not have been prepared for, or be suitable for legal, engineering, or surveying purposes. The County of Hastings disclaims all responsibility for errors, omissions or inaccuracies in this publication.



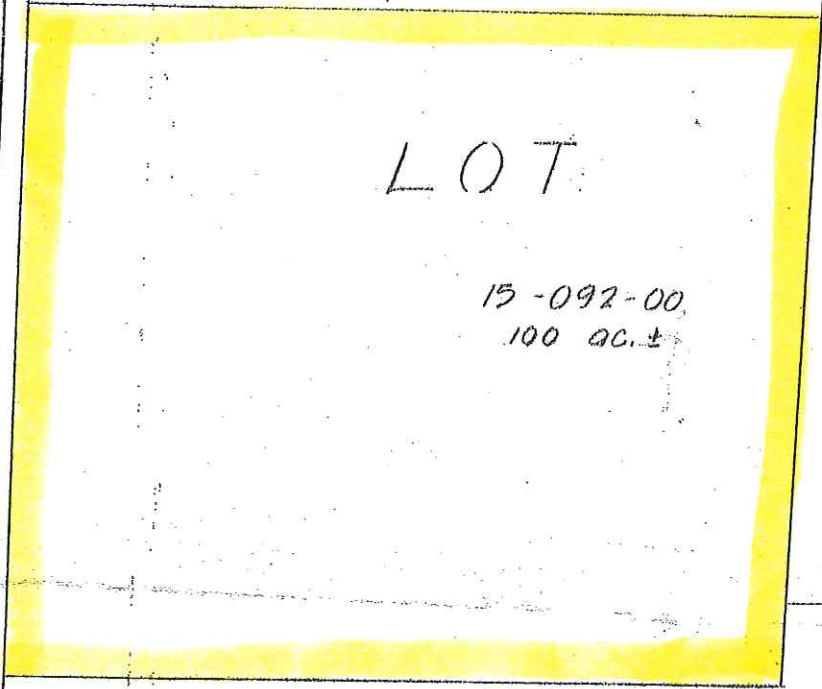
Map Scale: 1:14,478



Map created: 10/16/2018

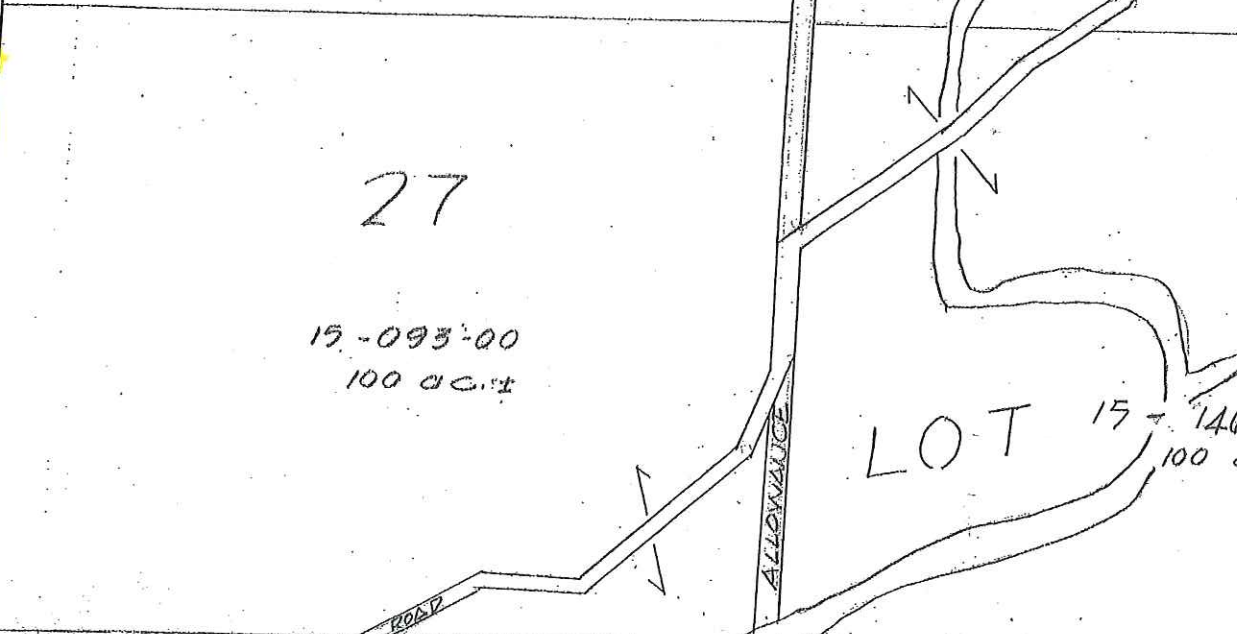
Restricted Site

TOWN



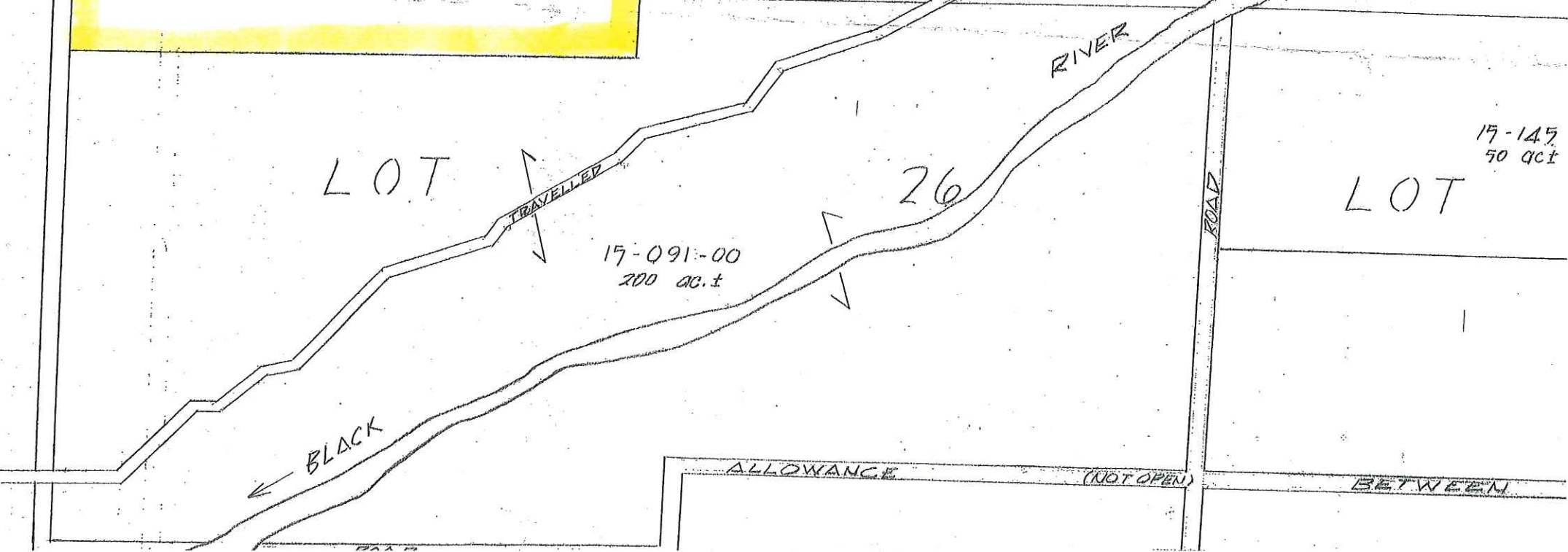
LOT

15-092-00
100 ac.±



27

15-093-00
100 ac.±



LOT 15-146
100

LOT

15-091-00
200 ac.±

26

LOT

15-145
50 ac.±

ALLOWANCE (NOT OPEN) BETWEEN